

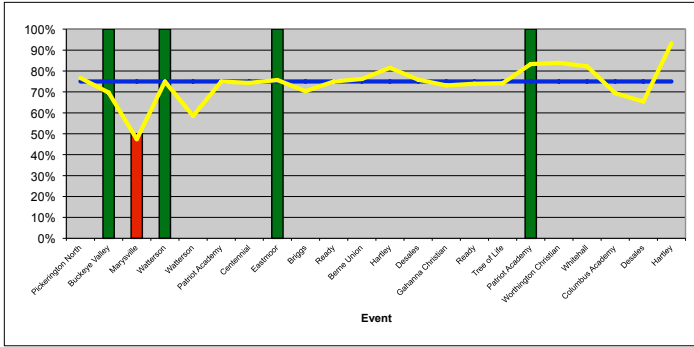
# Columbus School for Girls Volleyball

Balanced Snapshot for: Molly 2012

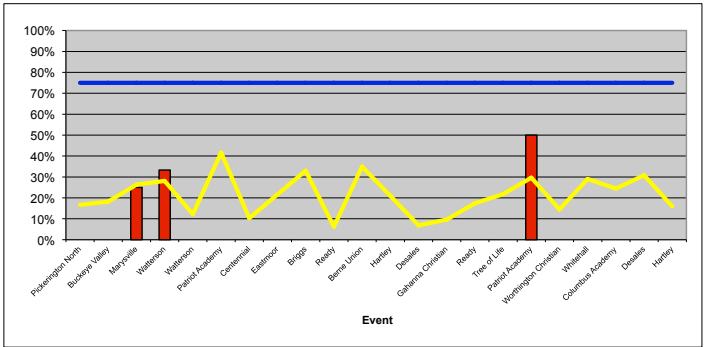


## Attacking

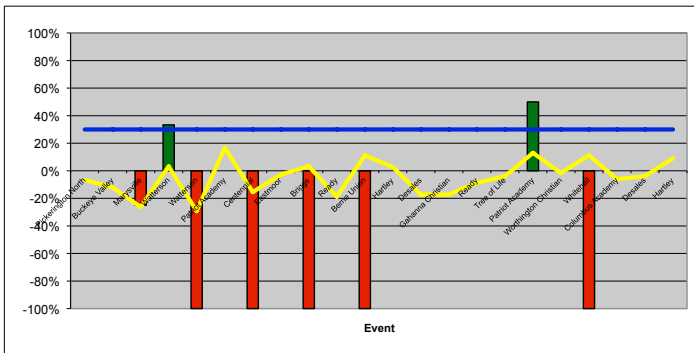
Attack Error Free % (Successes / Attempts)



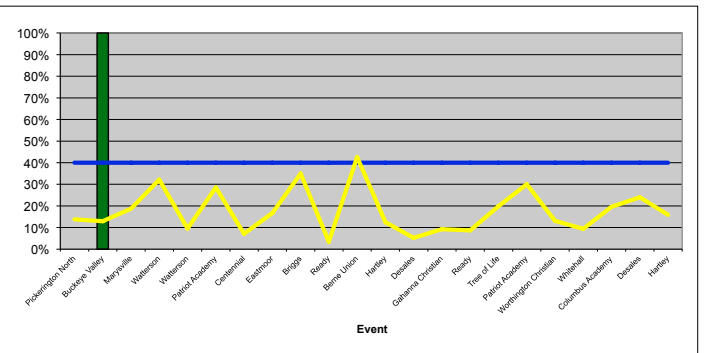
Attack Kill % (Kills / Attempts)



Attack Kill Efficiency ((Kills - Errors) / Attempts)

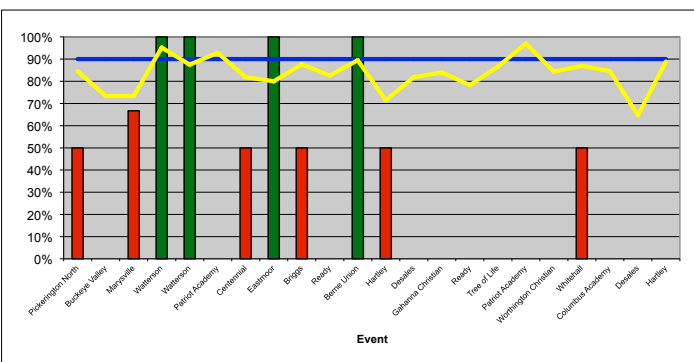


Assists Kill Probability (Assists / Attempts)

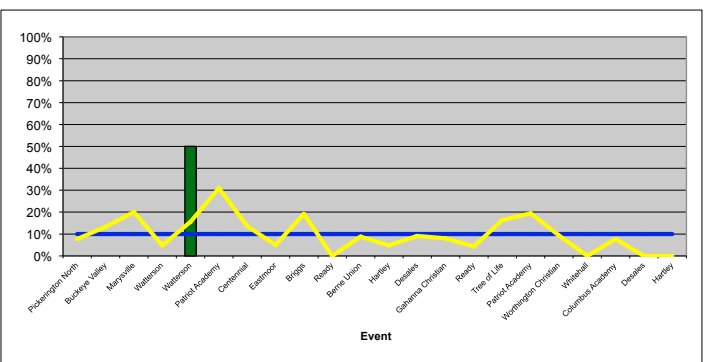


## Serving

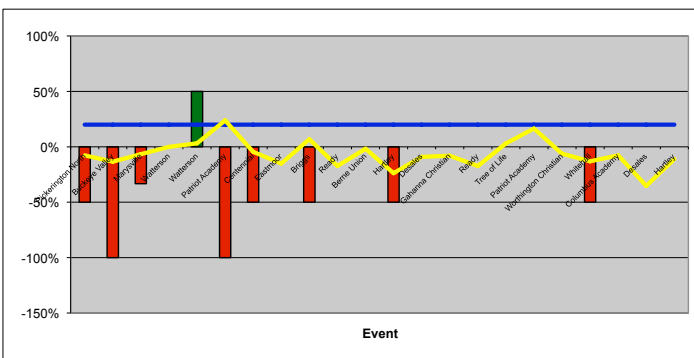
Serve Error Free % (Successes / Attempts)



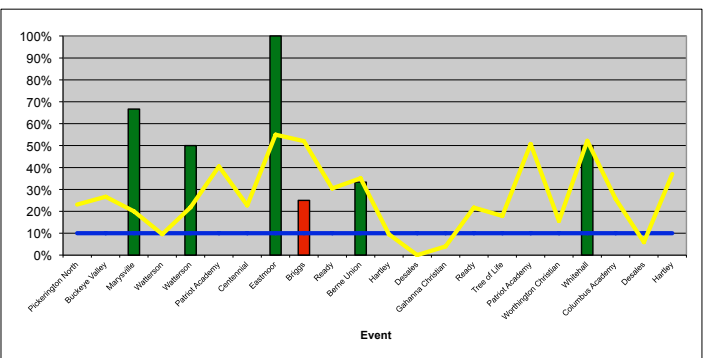
Serve ACE Probability (Aces / Attempts)



Serve ACE Efficiency ((Aces - Errors) / Attempts)

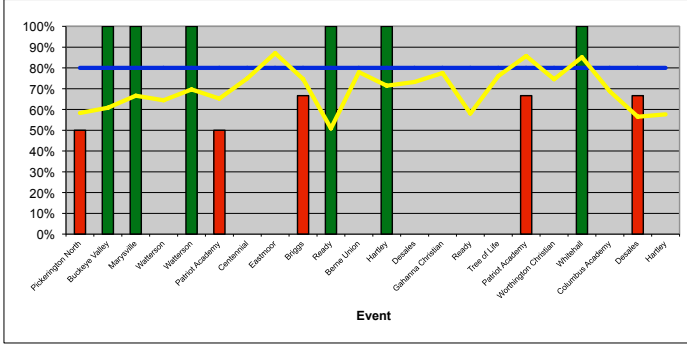


Serve WELL Probability (Serve 1's / Attempts)

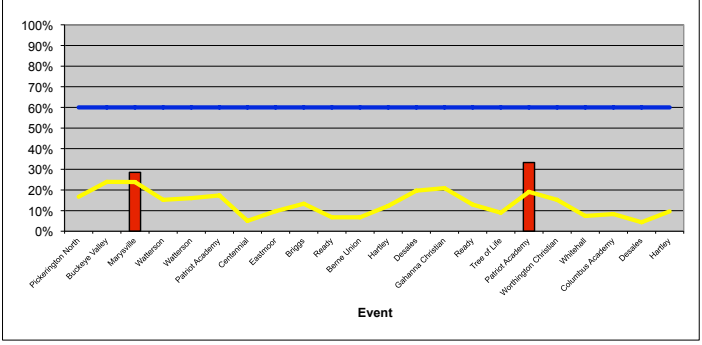


## Serve Receive

Serve Receive Error Free % (Successes / Attempts)

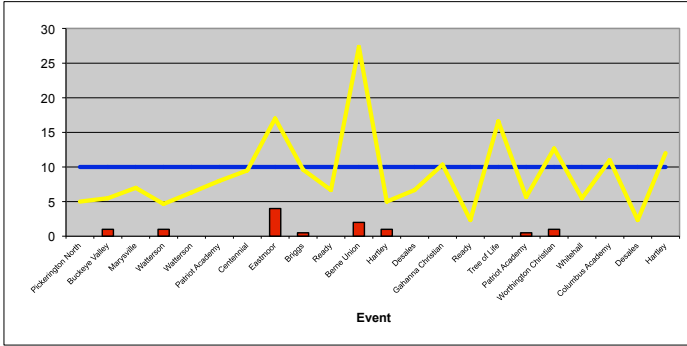


Serve Receive Excellent Probability (Serve Receive 2's / Attempts)

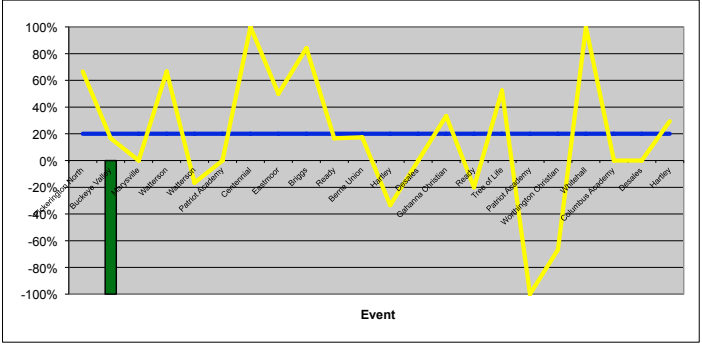


## Defense

Digs (Count of playable passes off an opponent's attack)



Blocking Efficiency ((Successes - Errors) / Attempts)



Bar Graphs

- █ Performance better than Goal
- █ Performance worse than Goal
- Target
- Prior Year

Line Graphs

- █ Performance better than Goal
- █ Performance worse than Goal
- Target
- Team Performance